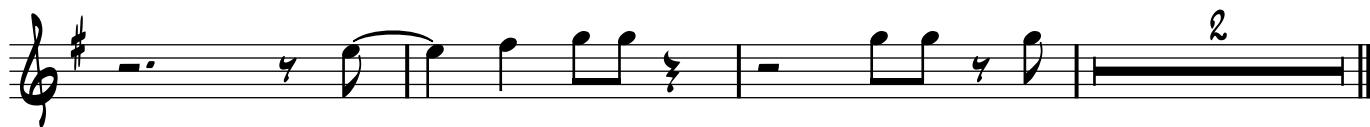
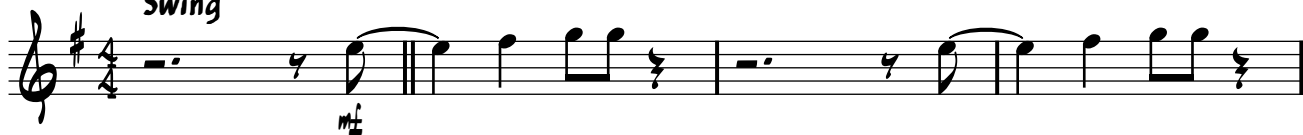


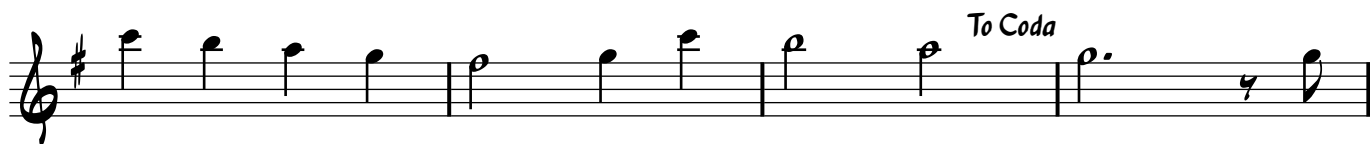
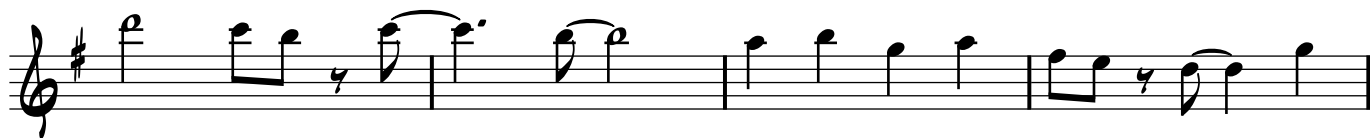
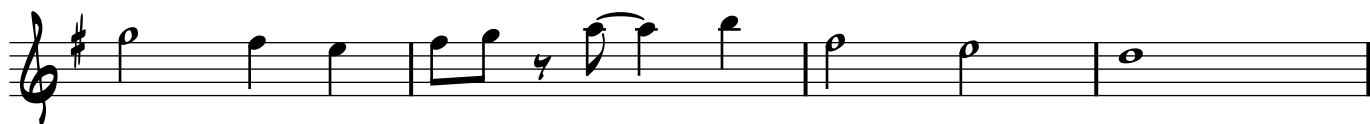
Trumpet

# Oh Come All Ye Faithful

Swing



A



B

solos: Guitar does first solo  
G6 E7#9

Am7

D7

Dm11



C#7#5

Cmaj7



2

1. 2. D.S. al Coda

This musical staff contains two endings. The first ending consists of six measures, and the second ending consists of five measures. The notation includes eighth and sixteenth notes, rests, and a double bar line at the end of each ending. The instruction "D.S. al Coda" is written above the second ending.

This musical staff features a sequence of eighth notes. It begins with a treble clef and a key signature of one sharp (F#). The notes are: F#4, G4, A4, B4, C5, B4, A4, G4, F#4, E4, D4, C4. The staff concludes with a double bar line.

This musical staff contains a sequence of notes and rests. It starts with a treble clef and a key signature of one sharp (F#). The notes are: F#4, G4, A4, B4, C5, B4, A4, G4, F#4, E4, D4, C4. The staff concludes with a double bar line.

This musical staff contains a sequence of notes and rests. It starts with a treble clef and a key signature of one sharp (F#). The notes are: F#4, G4, A4, B4, C5, B4, A4, G4, F#4, E4, D4, C4. The staff concludes with a double bar line.