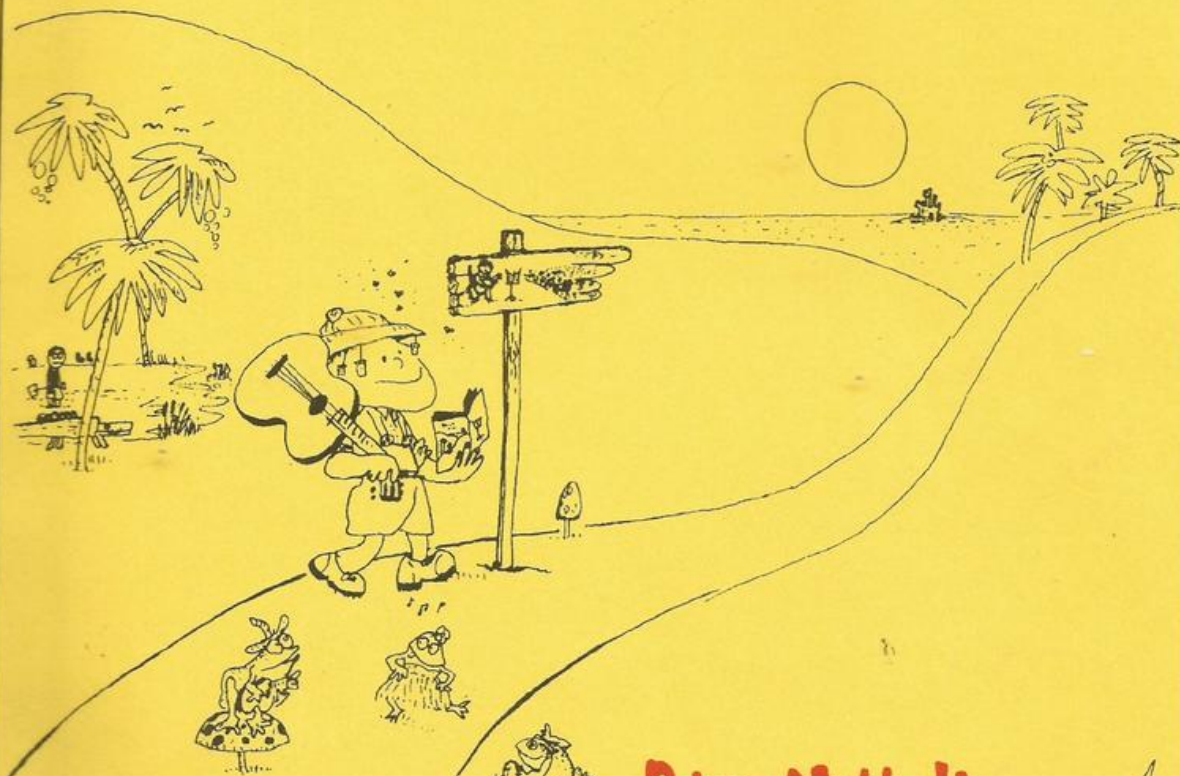




**The Guitarist's Way**

**Book 1**



**Peter Nuttall**  
and  
**John Whitworth**

**Holley Music**



# The Guitarist's Way

## Book 1

THE BANGALORE SCHOOL OF MUSIC  
32, Netaji Road  
BANGALORE-560 005, INDIA



Welcome to the Millennium Edition of *The Guitarist's Way* . . . . .

The series is designed primarily for those who are taking their first steps in playing the guitar, either in small groups or as individuals. It is assumed that there will be a teacher to give appropriate individual guidance, including how to hold and tune the guitar.

Through a series of graded tunes and exercises, Book One leads to the playing of simple melodies on the top three strings, whilst developing a secure technique in both hands. A few bass notes are then introduced, followed by pieces which combine a melody with a simple bass accompaniment.

Throughout the four books of the series, many pieces can be combined to produce duets or ensemble items. This will help to develop the enjoyable and important skill of playing with other guitarists. Phrase marks are omitted for the sake of clarity, but can easily be added according to personal preference.

Many people have helped us during our journey along "The Way", but of these we would especially like to thank Alison Bendy for all her comments and advice on the editorial side, and all of our many students who have "road-tested" the pieces and given us their verdicts!

We hope you have lots of fun in this exciting adventure . . . . .

*Peter Nuttall*

*John Whitworth*

Original compositions are marked *PN* or *JW*.

All rights reserved. No part of this book may be reproduced in any form or by any means, electronic, mechanical, photocopying or otherwise, without permission in writing from the publisher.

Music setting & layout: John Whitworth  
Cover artwork: Peter Nuttall  
Illustrations: Peter Nuttall & Gerald Garcia  
Editors: Alison Bendy, Peter Nuttall & John Whitworth  
Printed by Hall the Printer Ltd., Oxford, on paper  
produced from sustainable forests

L M FURTADO & CO  
MUMBAI-400 011

**Holl S001**  
**Ninth Edition**  
© Holley Music 2000

# INTRODUCTION

Music is written on 5 parallel lines  called a STAVE

The TREBLE CLEF  at the beginning of each stave fixes the pitch of the notes:



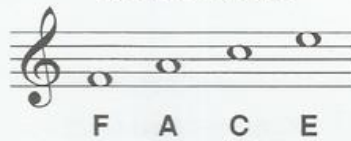
The NOTES (oval shape) can be either:



ON THE LINES

or


IN THE SPACES



Most music is divided into regular BARS by vertical lines called BAR-LINES

$\frac{4}{4}$  (The 'TIME SIGNATURE') means '4 beats in each bar'



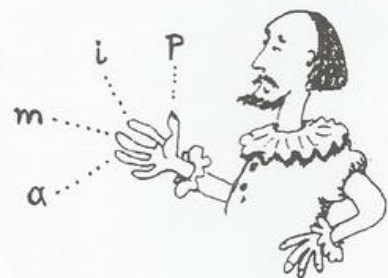
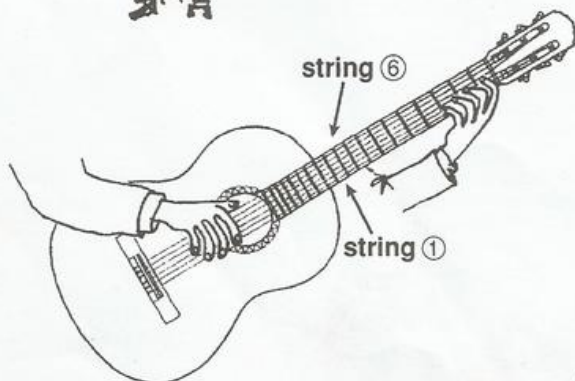
 lasts for 1 beat (= CROTCHET)

 lasts for 2 beats (= MINIM)

 lasts for 3 beats (= DOTTED MINIM)

 lasts for 4 beats (= SEMIBREVE)

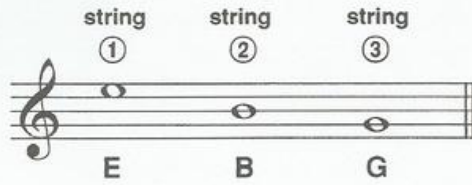
## THE RIGHT HAND



STRING  
IN  
A  
RING

A number in a circle tells you which STRING to play

# Open Strings



Always tap or clap the rhythm first

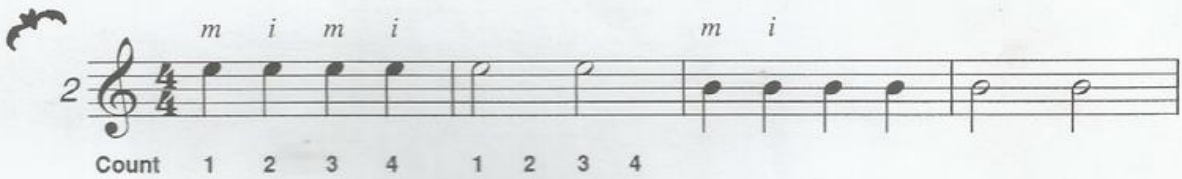
Rest thumb (p) on 5 or 6

Fingers play REST STROKE

Right hand: *i m i m*



Also mimi



also practise with anam imim mama



Ensemble: 1, 2 & 3 in any combination  
Play any one as a canon

Remember to alternate your right hand fingers

# Prelude

*p* (piano) means SOFT

*f* (forte) means LOUD

## Using the Left Hand

Notes on string ③

string left hand finger

G A



5

6

5, 6, 9 & 10 make accompaniments to "The Drunken Sailor"

### Three Notes

G A B



7

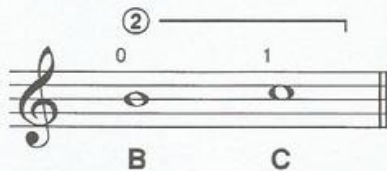
repeat

# Folk Song

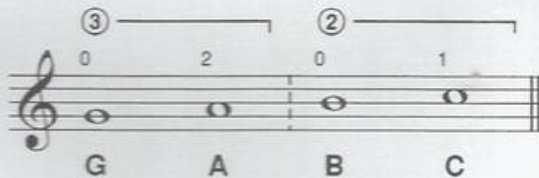


Mark in some **DYNAMICS**  
(Louds and softs)

Notes on string two ②



# Four Notes



# Up from G



$\frac{2}{4}$  means 2 beats in a bar

# The Fiddler

(crescendo)  
GETTING LOUDER



**3/4 time**



### Waltz

13 **Count** 1 2 3 1 2 3 1 2 3

Right hand: *im* or *ami* or *ima*

Ensemble: 1-bar canon



### Dutch Folk Song

14 **f** **p**



Note D is on string (2), fret 3

### Chinese Tune

D can be played with finger 3 or finger 4

15 **1 2 3 4**



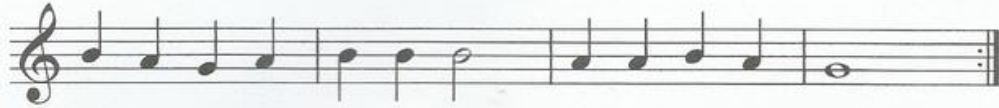
repeat the whole piece

16 **m** **i** **1 2 3 4**

Duet: 15 & 16



# Merrily



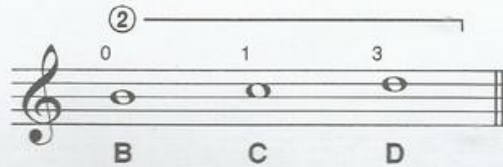
# Morning Mood

(from 'Peer Gynt' by Grieg)



(diminuendo)  
GETTING SOFTER

Notes on string two ②



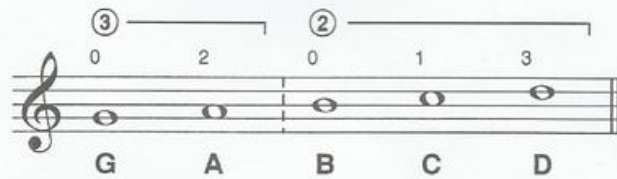
Duet: 17 & 19



# Study



Five Note Dictionary



Learn G major scale on page 15



# The Ladder



Leave finger 1 down when changing from C to D to C

Ensemble: 1- or 2-bar canon



### Six Note Dictionary

③ 0 2 ② 0 1 3 ① 0

G A B C D E

### At the Show

21 *i m*

1 2 3 4

PN/JW



22

Fine



D.C. al Fine



### La Bergamasca



### Elizabethan Dance Tune

23

*f* *p* *f*

*p*

#### Accompaniment

24

Duet: 23 & 24

Ensemble: 2- or 4-bar canon

# German Folk Song

25

## Using the Right Hand Thumb



Thumb plays  
**FREE STROKE**

Rest *ima* on ①

**New note**

26

Fine

D.C. al Fine

Duet: 25 & 26



## Bugle Calls



27(i)

p -----

(ii)

(iii)

PN

Compose some more!

Ensemble: 1- & 2-bar canons  
Also: (i) & (ii) & (iii)



# In the Moonlight



28 Fine 

D.C. al Fine 

Duet: 28 & 29

Notes on string one ①

E F G

First String Melody

29 Fine  JW

D.C. al Fine



# Good King Wenceslas



30 *f* *p*

*f*

Duet: 30 & 31 (!)

is a 1 beat (crotchet) rest

Eight Note Dictionary

③ ——— ② ——— ① ———  
0 2 0 1 3 0 1 3  
G A B C D E F G

Learn C major scales on page 15

Aunt Rhody

American Folk Song



31



This piece begins on beat 4

The Tallis Canon

32



Ensemble: 1- or 2-bar canon

Oh when the Saints

American Jazz Tune

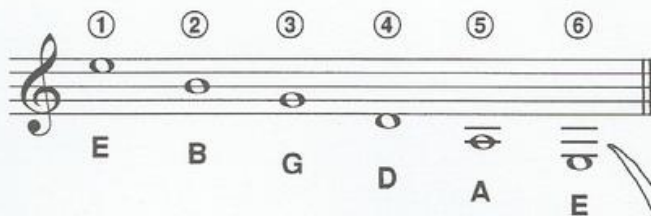
This piece begins on beat 2

33



 is a 2 beat (minim) rest

# The Six Open Strings:



Rest ima on ①  
for 34 & 35

## In the Deep



these are 'ledger lines'



**RESTS**

= 1 beat    = 2 beats  
 = 4 beats or whole bar

## Needing a Rest (12-bar Blues)

**New note**



miss out this bar on the repeat

## Jungle

Duet: 35 & 36





37

When music has two voices:  
Stems up - use fingers  
Stems down - use thumb



### Song of the Mountains



38

Fine

(unaccompanied)

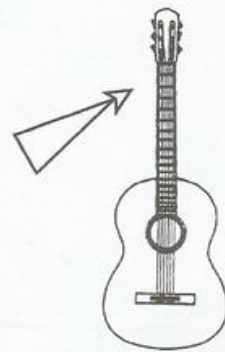
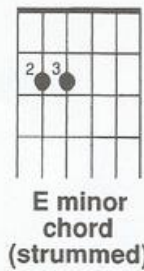
D.C. al Fine

### Accompaniments

39

40

or 37 or



..... or any combination!

# Carnival

Leave out the bass notes at first

41

The musical score for 'Carnival' consists of three staves. The first staff begins with a treble clef, a 4/4 time signature, and a dynamic marking of *mf*. The melody is written on a single line, and the bass line is indicated by a dashed line with notes below it. The second staff continues the melody and includes a first ending bracket labeled '1.'. The third staff includes a second ending bracket labeled '2.' and a dynamic marking of *p*. The piece concludes with a *rall.* (rallentando) instruction and a *PN* (Piano) marking. To the right of the third staff is a small illustration of a person in a carnival costume.

*rall.* (rallentando) means SLOWING DOWN

*mf* (mezzo-forte) means MODERATELY LOUD  
*mp* (mezzo-piano) means MODERATELY SOFT



# Spanish Dance

42

The musical score for 'Spanish Dance' consists of three staves. The first staff begins with a treble clef, a 3/4 time signature, and a dynamic marking of *mp*. The melody is written on a single line, and the bass line is indicated by a dashed line with notes below it. The second staff continues the melody and includes a dynamic marking of *f*. The third staff continues the melody and includes a dynamic marking of *f*. The piece concludes with a *JW* marking.



# Ukraine Folk Song

Allow the bass notes to ring on over the rests

43



## DAILY SCALES



G major

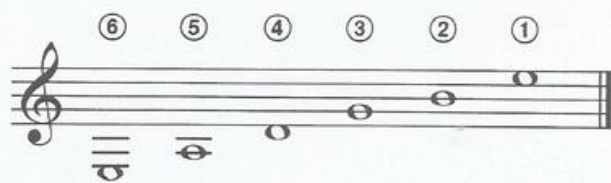
A minor

C major

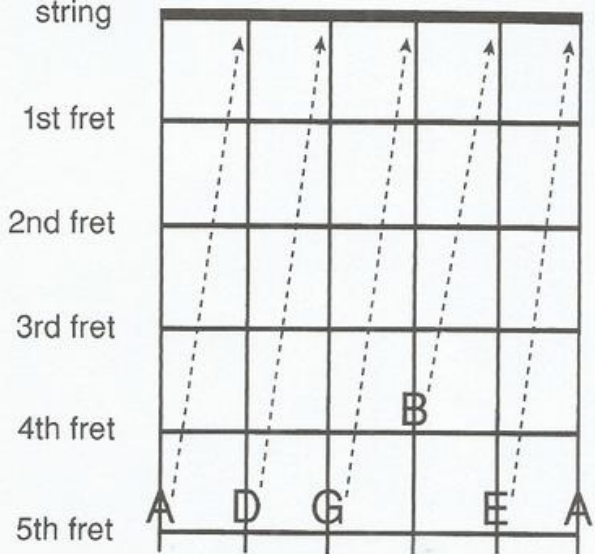
Scale of C major (plagal range)



# TUNING the GUITAR



Open string    E    A    D    G    B    E



Tune ⑥ to E if possible.

- Play ⑥ at fret 5. Tune open ⑤ to this note.
- Play ⑤ at fret 5. Tune open ④ to this note.
- Play ④ at fret 5. Tune open ③ to this note.
- Play ③ at fret 4. Tune open ② to this note.
- Play ② at fret 5. Tune open ① to this note.

Check tuning with E minor chord (see p.13)

# NOTE FINDER

*s = semitone*



**After Book One you will be ready for . . .**

**THE GUITARIST'S WAY BOOK 2 . . . . . Peter Nuttall & John Whitworth**

**Holl S002**

In Book 2 (Millennium Edition) you will find: new rhythms involving quavers and dotted crotchets - bass notes - two-note chords - sharps & flats - easy free stroke - position changing - fifth position . . . and lots of great pieces, including *Got the Blues, Polish Dance, Serenade, Gypsy Dance, Night Flight, Adagio & Toccata*.

**FIRST CAROLS . . . . . arranged by John Whitworth**

**Holl S011**

A popular new edition of twelve favourite carols, arranged with the first year player in mind. They stay mainly in first position and are ideal companion material to Books 1 & 2 of *The Guitarist's Way*. Chord symbols are included for a second player. The illustrations are by Gerald Garcia.

**THE ROBIN HOOD PIECES (2 or more guitars) . . . . . John Whitworth**

**Holl E051**

An exciting suite of five descriptive pieces, suitable for first year players (either singly or in an ensemble), with an interesting accompaniment part for the teacher (or Grade 4/5 pupil!). Works well as a school project.

**Titles:** *The Flight of the Arrow - Robin Hood & Little John - Forest Voices - Friar Tuck - Robin & Marion*

**DRUNKEN SAILOR (4 or more guitars) . . . . . arranged by John Whitworth**

**Holl E052**

A dramatic setting of the well-known sea shanty for guitar ensembles of mixed ability. One part is very easy and suitable for near beginners. The other three parts are approaching Grade 1 level. **Score & 2 sets of parts.**

**TRIO of KINGS (3 or more guitars) . . . . . arranged by John Whitworth**

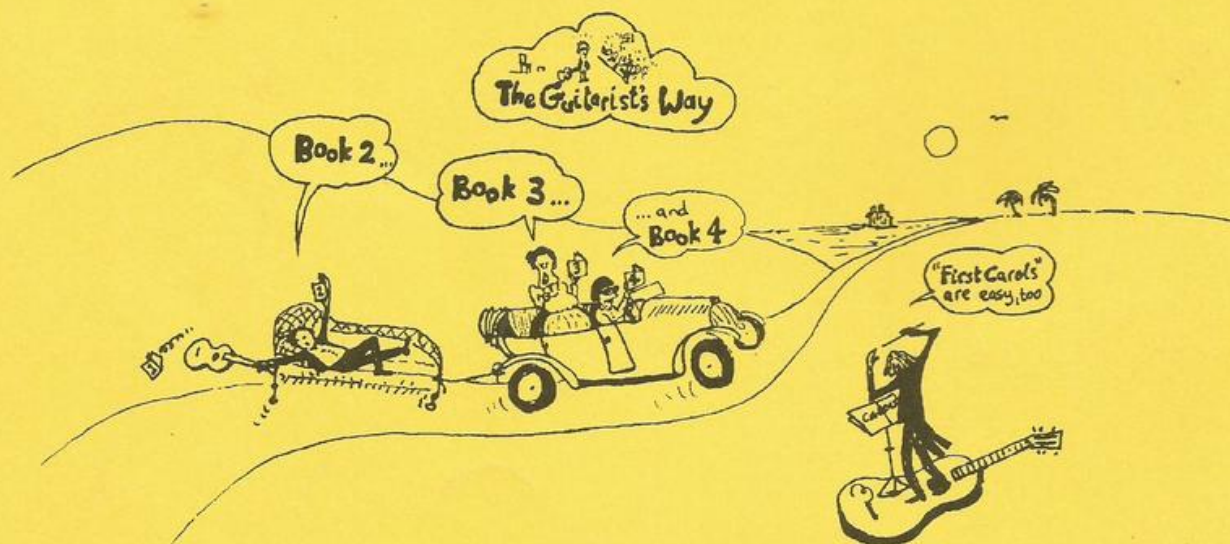
**Holl E053**

A descriptive setting of the carol *We Three Kings*. The melody is shared between the three parts, one of which is easier than the other two. Suitable for first and second year players, and an ideal Christmas concert item. **Score & 2 sets of parts.**

*Available from all good music shops and guitar centres*

**A full catalogue/price list is available on request from  
Holley Music, 25, Bickerton Road, Headington, Oxford OX3 1T**

*More guitar music by Peter Nuttall is available from  
Countryside Music, 48, Hillside Crescent, Nether Heyford, Northants NN7 3LS*



**HOLLEY MUSIC**

GUITARNOTES  
SGC, 44 NOTTINGHAM ROAD  
NOTTINGHAM NG7 7AE  
www.guitarnotes.co.uk  
TEL: 0115 962 2709  
FAX: 0115 962 5368

CODE 2917 08021-01-8

Music Specialist  
Rs. 396.00  
326.00

11920021181028603  
Guitarist's Way, The - 1

LMF