

NIGHT AND DAY

VOCAL FEATURE - Low Key (Female)

1ST B♭ TRUMPET

Words by Music by
COLE PORTER
Arranged by DAVE WOLPE

MODERATE SWING (♩ = 132)

1 2 3 4

TO HARMON

5 6 7-9 10

10

11-13 14 15-17 18 OPEN

27

19-26 27 28 29-34

35 36 37 38

39 40 41 42

43

43-48 49 50

51

51 52 53-54 55

TO CODA

3

56 57-59 60

(61)

62 63 64

65 66 67 68

(69)

70 71 72

73 74 75 76

(77)

78 79 80

81 82 83 84

(85)

85-92 D.S. AL CODA

CODA

93 94 95 96

97 98 99 100

NIGHT AND DAY

VOCAL FEATURE - Low Key (Female)

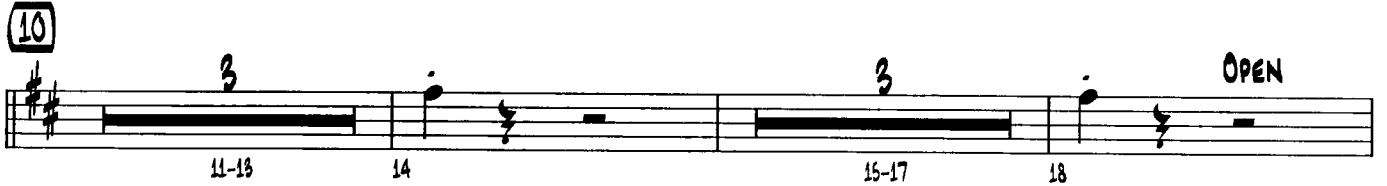
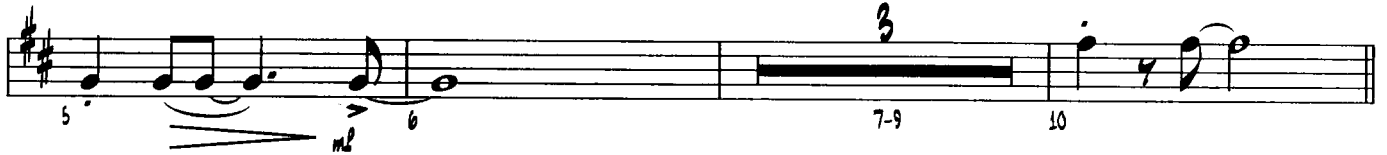
2ND B♭ TRUMPET

Words by Music by
COLE PORTER
Arranged by DAVE WOLPE

MODERATE SWING (♩ = 132)



TO HARMON



To CODA

56 3 57-59 60

61 62 63 64

65 66 67 68

69 70 71 72

73 74 75 76

77 78 79 80

81 82 83 84

85 8 D.S. AL CODA

85-92

CODA

93 94 95 96

97 98 99 100

NIGHT AND DAY

VOCAL FEATURE - Low Key (Female)

3RD B♭ TRUMPET

Words by Music by
COLE PORTER
Arranged by DAVE WOLPE

MODERATE SWING (♩ = 132)

TO HARMON

To CODA

3

61

69

77

85

8

D.S. AL CODA

85-92

CODA

NIGHT AND DAY

VOCAL FEATURE - Low Key (Female)

4TH B♭ TRUMPET

Words by Music by
COLE PORTER
Arranged by DAVE WOLPE

MODERATE SWING (♩ = 132)



TO HARMON



10



27



43



51



4TH TRUMPET

NIGHT AND DAY

To CODA

56 3 57-59 60

61

62 63 64

65 66 67 68

69

70 71 72

73 74 75 76

77

78 79 80

81 82 83 84

85

85-92 D.S. $\text{\textcircled{X}}$ AL CODA

CODA

93 94 95 96

97 98 99 100