

# Angel Eyes

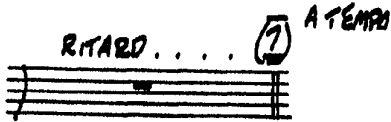
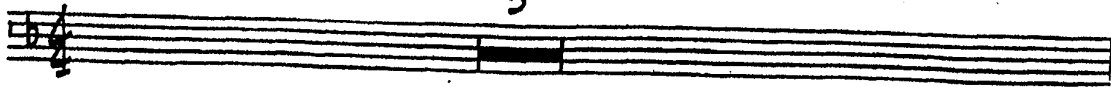
Library Number

VOCAL

by Earl Brent  
& Matt Dennis  
arranged by Matt Harris

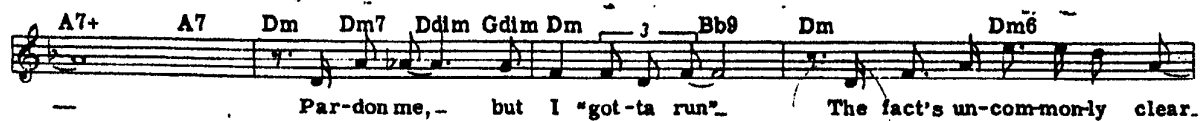
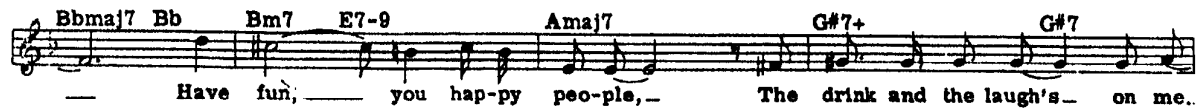
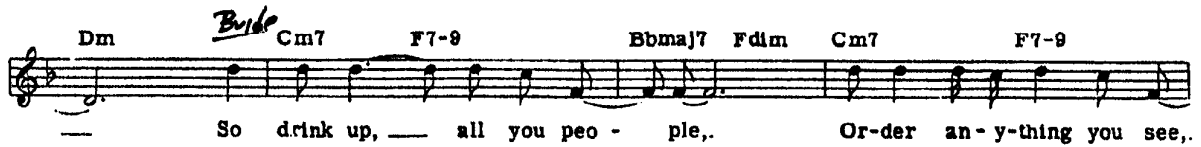
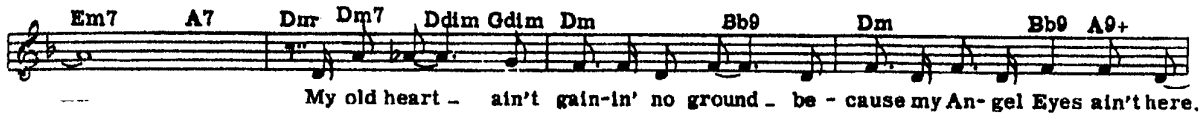
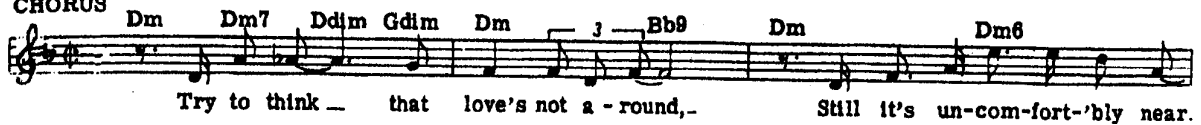
BALLAD 1=72

5



Song written in Wroup  
Key should be Cm  
1 Note lower

## CHORUS



Em7 A7|v Dm Dm7 Ddim Gdim Dm Bb9 Dm Bb9 A9+

Got-ta find\_ who's now "number one" and why my AN-GEL EYES ain't here.

Dm Gm6 A7

7

So

Cm7 F7-9 Bbmaj7 Fdim Cm7 F7-9

drink up, all you peo - ple,. Or-der an-y-thing you see,.

A7+ A7 Dm Dm7 Ddim Gdim Dm Bb9 Dm Dm6

Par-don me, - but I "got-ta run". The fact's un-com-mon-ly clear.

Em7 A7|v Dm Dm7 Ddim Gdim Dm Bb9 Dm Bb9 A9+

Got-ta find\_ who's now "number one" and why my AN-GEL EYES ain't here.

Dm Bb9 A7 Dm

'Scuse me while I dis - ap - pear. -

© Need A Chart  
noteable@bellsouth.net