

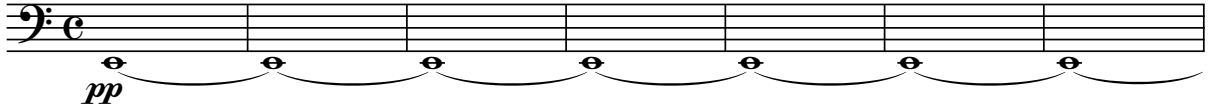
Contrabbassi

MAURIZIO BIGNONE

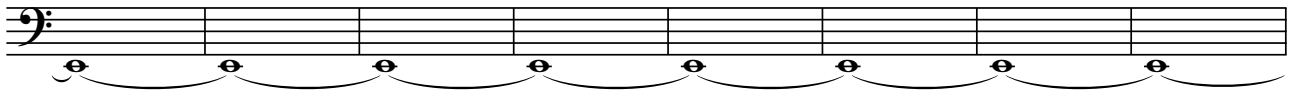
Il mistero di Cossyra

per orchestra d'archi

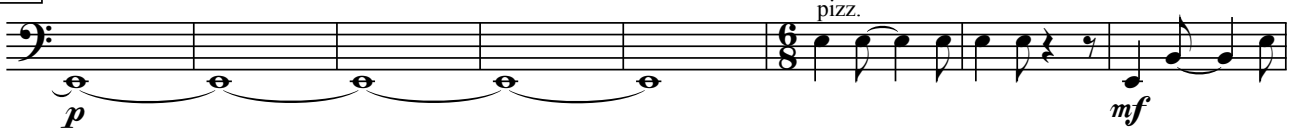
♩ = 60



8



16



24



31



37



47



55



62



68 Cb - 2

74

mp *mf* *rall.* arco

84

pp *f* pizz.

90

96

102

ff *mf* arco

110

115

120

124

128

mp pizz.

132

137

Cb - 3



142



147



mf

152



mp

157



162



mf

167



171



f

177



181



186



ff

190



mp

195

Cb - 4



203



211



218



225



232



239



246



253



260



267



senza rallentare *pp*